



We're All Connected in Health




christian hospital
FOUNDATION
BJC HealthCare

2022-23
Special Report
to the Community



2022 Christian Hospital Foundation Community Benefits



509
free rides
given to patients

750
community members
received assistance with
1,200 medications

150
new donors

\$474,245
awarded in community
benefit grants

150+
employees who donated to
the hospital each paycheck

\$59,000
donated by Christian Hospital employees
for hospital and community programs

1,795
free flu shots given to
the community

750
community health
screenings

300
free diabetes starter
kits distributed

Connecting for a **Healthier Community**



Dear Neighbors,

A rising tide lifts all boats. This simple phrase conjures an inspiring image of everyone working together and drives so much of what we do through Christian Hospital Foundation.

Building healthy communities is at the heart of our mission. If we focus on making our north St. Louis County community healthier and stronger, our whole region benefits, whether you live in Chesterfield, University City, Kirkwood, Ferguson, Florissant, or Godfrey, Illinois. We're all connected in health—and our future depends on it.

Through this special community report, we're sharing the good news and the life-changing impact we're making together, thanks to your support.

Thank you for your gifts that buoy hope and open doors for more people to access the vital care and resources they need. Our Community Health Access Program (CHAP), funded by donor gifts, is just one example of how we're improving our community's health right in our patient's homes.

We're proud of our Christian Hospital team members such as Connie Douglas and Paul Drake who bring a heartfelt commitment to their work in the community every single day. And we're grateful for the dedicated community members such as Johnnie Greenlaw, Dave Otto, Rev. Cedric Portis, Trish Zupon, Lorenzo Boyd, Schron Jackson, and countless others who immerse themselves in giving back with their time, talent and treasure to make life better for everyone.

Your thoughtful generosity to Christian Hospital Foundation matters to so many people who need us. Thank you for lifting up others as we build a healthier community—together.

With gratitude,

A handwritten signature in black ink, appearing to read "Rick L. Stevens".

Rick L. Stevens, FACHE
President
Christian Hospital
and Northwest Healthcare
Christian Hospital Foundation

A handwritten signature in black ink, appearing to read "Necole Cheung".

Necole Cheung
Executive Director
Christian Hospital Foundation
and Community Engagement

Specialized Suites

Keep Comfort Care in the Community

Thanks to donor support, Christian Hospital is able to offer two comfort care suites thoughtfully designed for patients receiving palliative care focused on comfort or hospice care at end of life focused on care, comfort and quality of life. However, demand is high and additional suites are needed to bring this specialized care to more patients and families in the north St. Louis County community.

Understanding Comfort Care

When patients are facing a chronic or serious illness, palliative care can help patients understand their medical treatment options as well as provide ongoing support to meet physical, emotional and spiritual needs. This specialized care also focuses on relieving the pain, stress and debilitating symptoms of serious illness. Palliative care can be provided along with treatment aimed at curing or controlling disease.

Hospice care is focused on comfort and quality of life rather than curative treatments for patients approaching end of life. Hospice care can be offered at home, in the hospital, at a long-term care facility, or at a separate hospice house.

Palliative care is not hospice care. Palliative care can transition to hospice care when a patient has a life expectancy of six months or less, explains Tracee Raife, DNP, MBA, APRN, ANP-BC, nurse practitioner in palliative care. “In the Christian Hospital comfort care suites, we can transition patients from palliative care focused on comfort to hospice care focused on comfort and quality of life.”

Traditionally, hospice care is provided at home. A hospice team member visits regularly; however, a family member must be available 24 hours a day to support the patient with taking medications and managing other needs. Yet some patients may need more aggressive care and symptom management to achieve relief and comfort than the family or outpatient hospice care team (nurses, doctors, patient care technicians, social workers, clergy and volunteers) can provide at home.

That’s why the comfort care suites at Christian Hospital are so essential, Tracee says.

Comfort care suites also offer families respite. “Some families with a loved one at home in

hospice experience caregiver strain,” Tracee explains. “We can continue hospice care and symptom management in the comfort care suites to give caregivers rest.”

Peace, Dignity and Family

The two comfort care suites at Christian Hospital are distinct from traditional patient rooms. Gifts to Christian Hospital Foundation have enabled remodeling of physical spaces and have expanded the services patients and families can receive in the comfort care suites to support patient dignity and bring peace and comfort.

“These rooms look different from other patient rooms in the hospital,” Tracee says. “We want to take away the stigma of hospice care and positively shape the patient and family experience.

The team assigned to the comfort care suites at Christian Hospital includes a doctor, nurse practitioner, registered nurse and patient care tech as well as a social worker and chaplain may visit patients.

> *continued on page 6*



“These rooms look different from other patient rooms in the hospital. We want to take away the stigma of hospice care and positively shape the patient and family experience.”

—Tracee Raife, DNP, MBA, APRN, ANP-BC

Comfort care suite amenities include:

- Flat screen TV
- Couch that converts to a bed so a family member can stay overnight
- Larger room to accommodate more visiting family members
- Bathroom in the suite

The comfort care suites are adjacent to a family gathering room that includes coffee, water, juice, and snacks so families can comfortably stay near their loved one.

Making a Difference for More Families

While Christian Hospital currently has two comfort care suites, Tracee hopes generous donors will step forward to help transform additional rooms to meet the growing demand for this purposeful care model.

“There’s a huge need for these comfort care suites,” she says. “We often have people waiting to be able to get into them. The opportunity to provide this experience to more patients is currently limited by having only two comfort care suites in the hospital. Having more of these available contributes to the overall mission of Christian Hospital.”

She adds that having comfort care suites at Christian Hospital gives patients an option to stay in the community where they live while they receive palliative care focused on comfort or hospice care focused on quality of life.



From left: Rev. William L. Johnson III, M.Div., MTS, D.Min., BCC, chaplain; Tracee S. Raife, DNP, MBA, APRN, ANP-BC, palliative care nurse practitioner; Jocelyn Wymys, RN, MSN, OCN, palliative care specialist; and Emily Selhime, MSG, BSW, social worker. Not pictured: Arahon Sykes, LMSW, social worker.

“We’ve seen an increase in people who want to stay at Christian Hospital for care because their family, social and church community are near Christian Hospital. The most important thing patients look forward to is seeing visitors—it’s medicine for them. When you take patients out of their community, it’s more challenging for visitors to get to them.”

Tracee also says donor generosity through Christian Hospital Foundation will help expand special services for patients in palliative care or hospice care.

“Patients can live for months on hospice,” she says. “So in addition to a nice, relaxing space, we want to offer patients in our comfort care suites music and art therapy,



pet therapy, fresh flowers delivered to their rooms, someone to come in to do their hair and nails, and other beneficial services to enhance their quality of life.”

Near the comfort care suites, Tracee would like to create a space for patients’ children and grandchildren to play so adults can have more private, reflective moments with their loved one.

“Christian Hospital is nationally known in many areas of specialized care and services and I would love to continue to see Christian Hospital remain at the forefront of providing palliative care focused on comfort and hospice care focused on quality of life at end of life,” she says. “Through comfort care suites, we can continue to transform the end-of-life experience for patients and their families.”

DONATE TO MAKE A DIFFERENCE

Every gift matters. Please support comfort care suites using the enclosed envelope or by calling 314-653-5162. Give online at christianhospital.org/donate.

Building a Strong Community Through House Calls and Phone Calls

The pandemic highlighted needs in the north St. Louis County community like never before. Because of generous donor support and a passionate team, Christian Hospital's Community Health Access Program (CHAP) has been able to step in to meet those ongoing needs and make a difference in the community.

In January 2021, CHAP refocused its efforts to address the dramatic increase in referrals for the social determinants of health barriers, such as electricity, shelter, transportation, food, and legal help.

Connie Douglas, DNP, ANP-BC, a CHAP nurse practitioner, and Paul Drake, CHAP manager, lead the CHAP team to address the growing need for resources in the community.

The CHAP team includes a nurse practitioner, community health workers and a resource coordinator. As trusted members of the community who live, work, and play in north St. Louis County, the team has knowledge of the resources available and has a deeper

understanding of the barriers that exist, community culture, and environment.

Community health workers meet patients at their bedside in Christian Hospital to enroll them in CHAP. Patients are then monitored for 30 days before they are graduated from the program.

"We are the eyes and ears of the hospital once patients go home," Paul says. "We support patients, answer questions about discharge, medications, or transportation, and we walk alongside them. When patients have no answers to questions, they end up in the emergency department. But having a support system keeps them out of the hospital."

"This is a 'heart' job," Connie adds. "It is imperative to have compassion and meet patients where they are. Many just need to know that you care. I do my best to help patients understand their disease process, as well as what their medications are for, and how to properly take them. Many of



"The Foundation is a lifeline to our program to help patients. My reward is when I hear, 'thank you, you made a difference.'"

—Connie Douglas, DNP, ANP-BC

our patients have low literacy and one of my main goals is to help them understand, again, by meeting them where they are.”

Feeling the Love

CHAP partners with Christian Hospital Foundation to help pay for patient medications, transportation to the hospital, utilities and other needs that impact patient health.

“Christian Hospital Foundation’s support allows us to do our job,” Paul says. “We stand on the shoulders of the Foundation.”

Connie and Paul make home visits with patients who frequently are admitted to Christian Hospital. “We will meet patients at doctors’ appointments to help advocate on their behalf,” Connie says.

Patients have access to Connie 24 hours a day. “It is important that patients have access to me—they have my cell phone number,” she says. “Affording them access allows them to have the support as well as clinical management to help prevent them from returning to the emergency department.”

The CHAP team plans to begin home visits with the community health workers as the program grows. Together, this passionate team served 2,393 people from January through November 2023. The need continues to rise year-round.

“We’ve served more people this year than ever because we have more community health workers,” Paul explains. “This means we can enroll more people to prevent them from having to return to the hospital within 30 days.”

“By meeting patients in their homes, we can more easily identify barriers,” Connie says. “We’re able to see if they have electricity and food in their house. And people share more when we go to the door. Home is their safe space.”

She continues: “Patients don’t expect us to follow up with them. But even just a phone call builds trust, a relationship and rapport with patients and they start to feel the love.”

One of the patients CHAP has served is Sherika Nicolé Trotter, a young mother who has sickle cell anemia, a painful lifelong condition that causes many debilitating symptoms. Shericka is determined to stay well for her 7-year-old son. CHAP has been an invaluable connection for her.

“Connie doesn’t talk at me, she talks to me,” Sherika says. “I want to say thank you for elevating me and believing in me.”

“The Foundation is a lifeline to our program to help patients,” Connie says. “My reward is when I hear, ‘thank you, you made a difference.’”



“We are an advocate for the voiceless. When we offer help, you can see the walls come down as we pull back the layers of barriers.”

—Paul Drake, CHAP manager

Another community member, Terrie Clark, has severe lung disease. For nearly a year, she had been in and out of the hospital because of breathing difficulties. At home, she depended on an oxygen machine 24/7, which requires electricity. However, when her electric bill soared to more than \$700 over two months, she couldn’t afford the payment and was terrified she would have to go without her oxygen machine.

> *continued on page 10*

“It was scary because I need the oxygen machine to breathe, but I was worried how I would pay the electric bill,” Terrie says.

Then CHAP stepped in and paid Terrie’s electric bill thanks to Christian Hospital Foundation’s support. Terrie’s oxygen machine remained on so she could breathe easier.

“It was such a big relief,” Terrie says.

“We are an advocate for the voiceless,” Paul says. “When we offer help, you can see the walls come down as we pull back the layers of barriers. Patients are gracious and thankful for the work Christian Hospital does. They identify us as people who really care about the community. We’re not just talking about it; we’re rolling up our sleeves and going out to make sure patients are OK and that they have their needs taken care of.”

The CHAP team is deeply committed to their role in the community. “We’re driven by passion,” Paul says. “We show patients that we do what we say we’ll do. We want to overdose them with hope and love.”

Driving Toward a Healthier Future

This year, the Christian Hospital Auxiliary purchased a car branded with an identifying Christian Hospital logo for the CHAP team to use for their patient home visits. When people see Christian Hospital out



Christian Hospital Auxiliary purchased a car for the CHAP team’s home visits to patients.

in the community, it builds more trust and awareness, Paul says.

“We’re extremely grateful to Christian Hospital Foundation and the Auxiliary for this car,” Connie adds. “It was truly needed because it allows us to get out there in reliable transportation to see patients who need us. It’s also a rolling advertisement for Christian Hospital and the CHAP team. It creates conversation, promotes our team’s safety, and shows we’re legitimate when we pull up in front of someone’s home.”

Removing Transportation Barriers

CHAP recognizes that transportation is a major barrier for patients to get to doctors appointments to stay healthy.

“We discovered one patient was even calling an ambulance to get to his doctor’s appointments because he had no other way to get there,” Paul explains. “When patients miss appointments, they can’t refill their

prescriptions and then they end up in the hospital again.”

To address this, Christian Hospital Foundation created the Medical Transportation Fund. CHAP uses these funds to pay for necessary patient transportation.

Currently, more than 20 hospital departments access the fund to help patients. “The need is great and growing,” Paul says.

CHAP pays for ride share expenses for patients in need to get from home to the hospital and back. If patients need a wheelchair or stretcher, the hospital works with a company to provide a special accessible van for transportation, but it’s a considerable expense.

“Donor funding for the transportation services is paramount to our patients,” Paul says. “The Foundation has our backs to

support patients. Unfortunately, we can't provide rides to everyone who asks. The funds are used up quickly each year and we need ongoing support to help more people. "

He says the CHAP team takes time to educate patients and hospital team members about other community ride resources available. "We don't want patients to use ambulances to get to doctor's appointments. We work hard to create a sustainable approach and teach patients how to get rides, so they don't just have to lean on us. But there are some people who have no one to give them rides—they are exceptions to the rule. In those cases, it's better to pay a small amount to transport them to a doctor's appointment than to have them hospitalized. And people really appreciate the help."

A Bridge to Health

Often the need for rides and other support is just a bridge "as people get their ducks in a row," Paul says. "It's satisfying to see people rise up and become more independent and healthier at home after we've helped them. Sometimes we have to have tough conversations, but people appreciate the honesty. I'm blessed to be in this position. We are all servant leaders."

Paul pours his heart into his CHAP role. "When people in the community see your passion, they're willing to work with you," he

says. "I'm honest and fair with patients and treat them with the utmost respect. We have a small but mighty CHAP team going above and beyond every day to make a huge impact."

He continues: "This isn't a job—it's a mission and passion to take care of other people. As Mohammed Ali said, 'Humanity, respect and kindness is the rent you pay by living on this earth.' I believe in this work so much that I personally donate to the Foundation's Indigent Fund from my paycheck."

He says CHAP is helping to increase life expectancy in areas of St. Louis where people die 20 years earlier because they don't have health care resources. "With CHAP, we're able to support them, provide health literacy, medical transportation and resources, and be the bridge to medical care they need."

CHAP's success is capturing attention nationwide. Organizations frequently contact Connie wanting to know how to replicate the program. "I have worked really hard to build this program over the last 11 years," she says. "I have seen us transform and grow with great passion and commitment to the success of our patient's health. We have established great relationships with our community partners and many family members. We have figured out what works

DONATE TO MAKE A DIFFERENCE

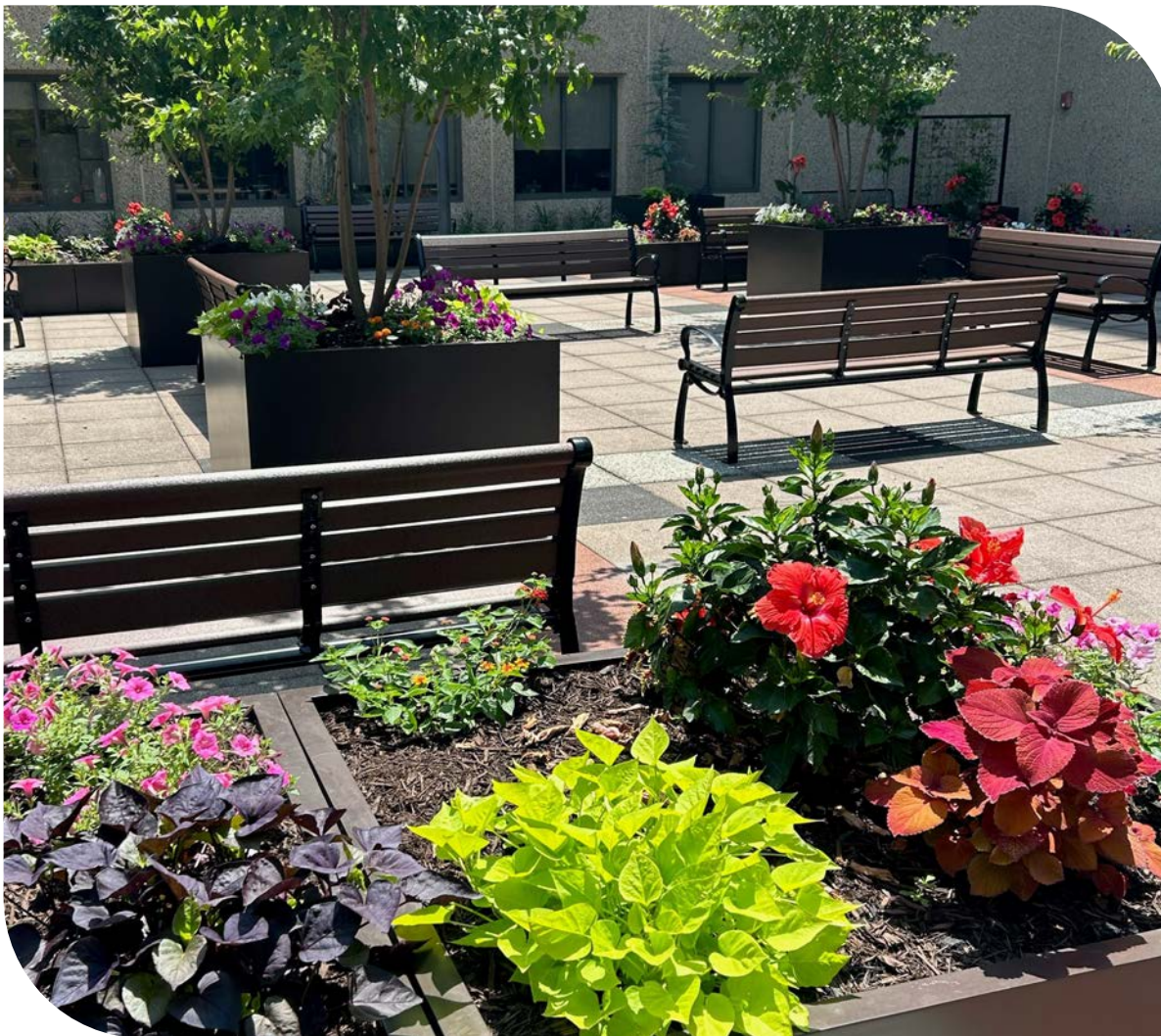
Every gift matters. Please donate by using the enclosed envelope or call 314-653-5162 or visit christianhospital.org/donate.

well, what does not work well and what patients need to be compliant. It's important to realize it takes time—even years—to build relationships and trust in the community."

Connie says many barriers remain but that CHAP is helping to overcome them. "Thankfully, we've been able to identify the many needs of our community and are making great strides with the program."

Donations to CHAP through Christian Hospital Foundation qualify for a NAP tax credit (see page 21) and strengthen the health and wellness of the communities we serve.

Garden Brings **Serenity, Healing and Beauty** to Patients and Families



Being surrounded by flowers and the beauty of nature is known to reduce stress and boost your mood. Now visitors to Christian Hospital will be able to soak in those benefits as they relax in the new Reflection Garden, located near the hospital lobby and cafe. The blooming beacon is thanks to Christian Hospital's dedicated Auxiliary, the fundraising arm of the hospital volunteers.

"The Auxiliary committed to the Reflection Garden to create an area that families, guests and employees can go to enjoy the fresh air in a beautiful, peaceful and tranquil atmosphere," says Sheryl McClary, auxiliary and volunteer services manager. "After the renovation of the front lobby and Courtyard Café area, the Auxiliary could see the potential of this outdoor space receiving a renovation to continue the beautiful atmosphere."

"We're proud and excited about the garden," says Johnnie Greenlaw, Auxiliary past president. "The garden is a place to relax and find serenity. People can come and meditate, pray, or read a book undisturbed because it's separate from all the bustle of the hospital. The garden also gives our health care workers a place to get away for a few minutes to relax and destress."

The garden project began before the pandemic and continues to expand. “Every time we go in the garden, we have more ideas,” Johnnie says.

An Enduring, Passionate Commitment to the Community

Over the past year, the Auxiliary has raised more than \$100,000 that has funded projects and programs at Christian Hospital.

Profits from the hospital gift shops and vending machines support the hospital through the Auxiliary. The group also holds monthly lobby sales from various vendors to benefit the hospital.

“Any money we make goes back to the hospital to make it better,” Johnnie says. “We’re working to help people of North County feel comfortable coming to Christian Hospital, where patients are treated so wonderfully. We can never do enough for the hospital.”

Over the past 40 years, the Auxiliary has raised significant dollars to support everything from medical equipment to ambulances to children’s books in the emergency department.

The Auxiliary continues to fund the complimentary valet/shuttle program at Christian Hospital in addition to funding individual projects such as the Reflection Garden and guest chairs for patient rooms.

> *continued on page 14*

Christian Hospital team members, Auxilians, volunteers and community members gathered for the official opening of the Reflection Garden, which will feature commemorative pavers.



Build Your Legacy with a Commemorative Paver

To further enhance the beauty of Christian Hospital’s Reflection Garden, Christian Hospital Foundation is offering you an opportunity to purchase a commemorative paver. Your paver purchase will help support the upkeep of the garden throughout the year and also will build your family’s legacy in our community. Generations to come will see your name and recognize your generosity.

Paver costs:

4 X 8: \$125, includes three lines/20 characters

8 X 8: \$250, includes five lines/20 characters

For more information on purchasing a commemorative paver, contact Laura Kilcullin at 314-653-5244 or Laura.Kilcullin@bjc.org.

“The garden is a place to relax and find serenity. People can come and meditate, pray, or read a book undisturbed because it’s separate from all the bustle of the hospital. The garden also gives our health care workers a place to get away for a few minutes to relax and destress.”

—**Johnnie Greenlaw, Auxiliary past president**

In addition, the Auxiliary invests and supports Christian Hospital employees through employee appreciation events during Health Care Week and continues to partner with the Christian Hospital Foundation as sponsors of the annual Golf Outing and Give the Gift of Health employee campaign.

Most recently, the Auxiliary supported the purchase of a car to support the hospital’s Community Health Assistance Program (CHAP) team in their visits around the community.



“The Auxiliary is passionately committed to enhancing the care, support, and well-being of the Hospital’s guests, staff, and the community at large through fundraising, collaboration, and financial stewardship to uphold the positive, nurturing atmosphere at Christian Hospital,” Sheryl says.

Johnnie continues to feel fulfilled through her involvement with the Auxiliary. “I ask people with time and who love mankind to join us in the Auxiliary,” she says. “It’s an opportunity to lift others up and help people through difficult times.”

Since the Auxiliary was formed in 1964, it has been recognized eight times for its service and fundraising efforts as the “Auxiliary of the Year” by the Missouri Hospital Association.



We're grateful for our dedicated volunteers, including long-time volunteers Bill and Carole.

Get Involved, Get Rewarded

Christian Hospital offers a variety of rewarding and fulfilling volunteer opportunities to give back to the community and share your time and talents. In return, volunteers are energized with a sense of purpose as they make new friends, connect with others, and stay active.

Christian Hospital volunteers range from 16 to 96 and are a significant part of the health care team. They participate in a variety of roles that can be tailored to individual skills and abilities. The hospital offers many flexible opportunities to volunteer during the day, evening and weekends.

If you have a passion for helping others and want to make an impact on our community while broadening your social network, volunteering at Christian Hospital is made for you!

For more information on Christian Hospital volunteer opportunities for those 16 or older, please contact Rita Johnson, volunteer coordinator, at 314-653-5233 or visit christianhospital.org/Giving/Volunteer.

Celebrating a Lifetime of Loyalty

When Dave and Mary Otto find something they believe in, they make a lifelong commitment. That has held true for them with each other, their home, their business, and their community involvement, including with Christian Hospital. Loyalty and gratitude drive them to help others and make a difference.

Community Roots Run Deep

Dave and Mary were both born and raised in north St. Louis County. They went to grade school together and their families were best friends.

“We were at each other’s houses for holidays as we grew up,” Dave says.

As teens, love blossomed and Dave and Mary later married. They moved into their home in Florissant the day after their wedding and have remained there for the past 45 years. They know what they like.

They’re also deeply invested in the community. The Otto family has owned hardware stores in the St. Louis area, including two in Florissant, for three generations. Dave’s parents, Ken and Kathleen, started the business in 1961,

and today Dave and his family continue to run three locations of Handyman True Value Hardware. Ken also was a former mayor of Pine Lawn and an alderman.

Like a loyal friend, Christian Hospital has been a centerpiece of the Otto family’s lives. Dave first volunteered there as a senior in high school and the Otto’s three children were born there. In addition, Dave’s father, Ken, had open heart surgery at Christian Hospital, the first community hospital in the area to offer this type of surgery. For 55 years, Ken was cared for by Sylvester Flotte, MD, an internal medicine specialist at Christian Hospital.

“Throughout our lives, Christian Hospital has been our go-to place for family health care,” Dave says.

A Commitment of Heart and Soul

Because of Dave’s passion for the community, he joined the Christian Hospital board more than 20 years ago. Since 2008, he has also served on the hospital’s Foundation board. In addition, he chairs the hospital’s Patient Care Committee.

“I’ve experienced all aspects of the hospital—from the patient side to the hospital board to the Foundation board,” Dave says. “I tend

to concentrate my volunteer efforts in a few areas and one of those is Christian Hospital. I won’t be involved in something if I can’t participate with my heart and soul.”

With zeal and pride, Dave shares the Christian Hospital story with anyone he works with and relates what the hospital is doing in the community. As a resident and business owner in north St. Louis County, he eagerly brings community input and representation to the hospital and Foundation board.

His various roles on the Greater North County Chamber of Commerce board for the past three decades connect him even more deeply to the community and Christian Hospital.

“As a local business owner and community member, it’s vital to have this hospital here,” Dave says. “It’s a valuable asset for our community to have the services and expertise that Christian Hospital has. Serving on the Patient Care Committee has allowed me to see the value of what we provide to patients and the people of North County. The hospital team is dedicated to being the best. Everyone—from the transporters to the nurses to the housekeepers—has an impact on the patient experience.”

Mary agrees. “We’ve had all positive experiences at Christian Hospital. The hospital offers such a wide range of expertise and medical specialties that allow us to stay close to home and in the community for care.”

Giving Back for a Healthier Community

For decades, Dave and Mary have been loyal supporters of Christian Hospital Foundation that is the catalyst for many health care advances and services to build a healthy community.

“From the hybrid operating room that allows less invasive procedures to the Community Health Access Program (see page 8), donors to Christian Hospital Foundation are making a significant difference in the community,” Dave says.

The Foundation continues to expand its impact in the community thanks to donors and committed leaders like the Ottos.

“Once we became involved in the hospital, we’ve wanted to stay involved,” Mary says. “I see Dave’s joy from his involvement and I’m proud of his commitment to the hospital and its Foundation.”

Like Dave, their son volunteered at Christian Hospital in high school.



The Foundation works with volunteers at Christian Hospital to provide essential services and care for patients.

“Christian Hospital has a long history of strong volunteerism,” Dave says. “The Auxiliary and volunteers are incredible and extremely vital to the hospital. And people get such fulfillment through volunteerism. A former neighbor volunteers at Christian Hospital at 82 years old. He says his life is so full since retirement because of his involvement with Christian Hospital.”

“The hospital changes lives and gives people purpose,” Mary adds.

The Ottos are proud to continue the legacy of giving back to the community that Dave’s father started. “I’m pleased to follow in my dad’s footsteps and give back on a personal level and through our family business,” Dave says. “The community has been so good to our business and our family. This community has been a wonderful place to grow up and raise a family and we want to give back in any way we can.”

Taking a Stand for Mammograms

Breast cancer is the second leading cause of cancer death in women, second only to lung cancer. Yet when detected early, studies have shown that the chance for successful treatment is almost 100%.

Smita Parikh, MD, is a radiologist focused on breast imaging at Christian Hospital. Unfortunately, the volume of cancers she detects is shockingly high because of the growing breast cancer inequity gap in north St. Louis County, especially in African American women.

St. Louis has the highest late-stage breast cancer diagnosis rate in the country, according to data from Susan G. Komen, with some of the highest mortality rates in north St. Louis County zip codes where one in four households are uninsured.

“I read approximately 10,000 mammograms last year at Christian Hospital.” Dr. Parikh explains. “African American women present with later-stage disease, more aggressive subtypes and larger tumors. Their survival rates are worse than white women. It is known that women who do not have health insurance are much less likely to get a mammogram. We need to help more women get regular mammograms.”



Troubled by these statistics, Dr. Parikh and her husband, Sharad Parikh, MD, are leading efforts to help more women get regular mammograms and to find more ways to improve survival of women with breast cancer in north St. Louis County.

The Parikhs have established a \$100,000 endowment to support mammogram assistance for women in need. The Breast Cancer Prevention Fund supports uninsured and underinsured women living in Christian Hospital's catchment area.

"Our main focus is to encourage women to come earlier for mammograms to save more lives," Dr. Parikh says.

"We are so grateful for the Parikhs' decision to stand up to cancer in our community through education and early detection," says Necole Cheung, Christian Hospital Foundation & Community Engagement executive director. "Through their generosity, women in our community will receive mammography services despite their inability to pay."

The Parikhs' life, work and mission will ensure that the Christian Hospital Foundation continues to build hope, health and community.

"The big-heartedness demonstrated by Drs. Smita and Sharad Parikh truly advances our mission to address the disparities of breast cancer screening and survival rates within our community," says Rick L. Stevens, FACHE, president of Christian Hospital and the Christian Hospital Foundation.

How to Light Up the Cause

By establishing the Breast Cancer Prevention Fund, the Parikhs have ignited a passion to make a difference for more women in our community. They are inviting others to join them in this mission.

Nearly 100 donors embraced the mission through a special event in December 2022 called "Light Up the Cause," hosted by Christian Hospital's South Asian Connections group and the Christian Hospital Foundation and Community Engagement team.

The Light Up the Cause celebration was hosted at the home of Adnan Siddiqui, MD, and Mehreen Khann, MD, with a silent auction and "Fund a Need." Both physicians are affiliated with Christian Hospital. Rene Knott, a KSDK-TV news anchor, was the emcee for the event that raised \$42,000 in one evening. Proceeds from the celebration supported the Breast Cancer Prevention Fund launched by the Parikhs. However, the need for support continues, Necole says.

DONATE TO MAKE A DIFFERENCE

Every gift matters. Please donate by using the enclosed envelope, calling 314-653-5162, or visiting christianhospital.org/donate.

"Breast cancer prevention is an ongoing need in our community. With donor help, we have the opportunity to grow the Breast Cancer Prevention Fund together so we can ease concern about how to pay for tests and treatments for even more women. Support of this fund fuels both the Show Me Healthy Women program and mammograms for patients in need. This means more women will be educated about and have access to high-quality mammograms and care."

Christian Hospital Ranked One of **Best Hospitals**

U.S. News & World Report for 2023-24 has again ranked Christian Hospital No. 5 in St. Louis for overall clinical excellence. The hospital advanced to No. 9 overall in Missouri, up from No. 11 last year, which puts Christian Hospital in the **top 6% of all hospitals in the state!**

The *U.S. News* adult methodology ranks clinical specialties and rates common care procedures and conditions. Christian was nationally ranked as “high performing” in the clinical specialty of geriatrics and in the following seven of 21 common procedures

and conditions: heart attack, heart failure, kidney failure, diabetes, COPD, pneumonia and stroke. High performing in a specialty means Christian Hospital was in the **top 10% nationally of all evaluated hospitals** for that specialty or procedure and condition.

In addition to Christian, Barnes-Jewish Hospital and Missouri Baptist Medical Center also achieved local, state and national rankings. **We are proud to be one of three BJC facilities recognized in Missouri’s top 10 hospitals.**

“It’s no small feat for Christian Hospital to achieve local, state and national rankings, and high-performing honors in eight specialty or procedures and conditions,” says Rick Stevens, FACHE, Christian Hospital president. “We achieved this collectively, as a team of highly skilled clinicians, nurses, medical professionals and non-medical professionals who all work together to ensure the best results for our patients. The credit goes to our health care heroes and leaders who continue to deliver compassionate care every day with selflessness.”

“We achieved this collectively, as a team of highly skilled clinicians, nurses, medical professionals and non-medical professionals who all work together to ensure the best results for our patients. The credit goes to our health care heroes and leaders who continue to deliver compassionate care every day with selflessness.”

—Rick Stevens, FACHE, Christian Hospital president

NAP Tax Credits Are a **Win-Win**

Quality health care is the cornerstone of Christian Hospital. The innovative approach taken to maintain a healthy community is crucial to what the hospital continues to do every day. Thanks to the Neighborhood Assistance Program (NAP) Tax Credit incentive, donations from eligible entities and business corporations can directly help the community while offering Missouri state tax credits.

With the funds raised by NAP donations, Christian Hospital's innovative Community Health Access Program (CHAP) is establishing a Medical-Legal Partnership to support individuals with legal assistance to take better control of their health and overall wellness. Patients will be assisted with issues such as enabling access to public benefits, resolving substandard housing conditions, removing unlawful barriers to education or unemployment, and assisting with guardianship and immigrations issues.

A donation of \$1,000 dollars or more will not only help fund the Medical-Legal Partnership, assisting those most vulnerable in our community, it will also provide eligible donors with Missouri state tax credits equaling 50% of their donation, for use over a five-year timeframe.

Example of a NAP Tax Credit Donation

For illustration only. Please consult your tax advisor prior to making a contribution.

	28% Tax Bracket	35% Tax Bracket
Donation amount	\$5,000	\$5,000
Federal Tax Savings	\$1,400	\$1,750
Missouri Tax Savings (6%)	\$300	\$300
Missouri Tax Credits (50%)	\$2,500	\$2,500
Net out of pocket	\$800	\$450

Eligible donors include businesses or individuals with Missouri business income, such as:

- Corporations
- S-Corporations
- LLCs
- Sole proprietors
- Partnerships
- Insurance companies
- Financial institutions
- Individuals operating a farm in Missouri
- Individuals with rental property in Missouri

FOR MORE INFORMATION

Contact Laura Kilcullin at 314-653-5244 or by email at Laura.Kilcullin@bjc.org.

Christian Hospital Employees Give Back

The employees at Christian Hospital BELIEVE. They believe in the hospital's mission so strongly that they give back from their own paychecks to the annual Give the Gift of Health Employee Giving Campaign.

By the end of 2023, Christian Hospital employees collectively gave nearly \$60,000 to support our patients, families, and co-workers. Their commitment to building a healthier community demonstrates their compassion and pride in the exceptional health care the team provides every day.

"We're extremely grateful to our dedicated employees who give of themselves in every way," says Necole Cheung, executive director Christian Hospital Foundation and Community Engagement Team. "Money raised from this campaign stays right here in this community in this hospital. It supports the patients our employees serve every day."

Employee Voices of Giving

"I support the Christian Hospital Foundation because of the good it can do, and the impact it can have, on the surrounding community and those in need. When we donate to a charitable organization, we help make a difference we're unable to provide with our own hands." —*Drew Danzyck*

"I chose to support the Christian Hospital Foundation through the Give the Gift of Health campaign because I believe in the mission and vision of our CH Foundation. I live in the North County community, have raised a family here, and want to support the community I live in. I believe in the programs that the Christian Hospital Foundation helps provide to our community, especially those that help with access to care for our community members who have barriers to obtaining these resources on their own. Being able to help support my community in partnership with my hospital is an honor and I am grateful for the opportunity to be a part of this campaign." —Christina Schoaf

"I give to support the Christian Hospital Foundation through the Give the Gift of Health campaign in order to give back to our patients that we serve and care for here at Christian. As a pharmacist, I see so many patients coming into the hospital who are not able to afford their medications. By giving to the Foundation, my support goes straight back to those patients to assist them in getting their needed medications." —*Jacklyn Harris*

Our Generous Employee Donors

Seth Alston
 Ella Anderson
 Kevin Anderson
 Jeremy Andis
 Lisa Avery
 Dana Ballinger
 Keri Barker
 Stefanie Barnard
 Teri Bequette
 Bret Berigan
 Sherran Bernaugh
 Lorri Binger
 Helen Blair
 Heather Bock
 Maribeth Bolk
 Bronwen Bondevers
 Sherry Boster
 Jasmine Boyle
 Robin Britton
 Crystal Brown

Gabrielle Brown
 Latanya Brown
 Yvette Cain
 Jayne Campbell
 Melissa Cardenas
 Danielle Carre
 Latasha Caruthers
 Necole Cheung
 Yasmin Chittakhone
 Carmen Clines
 Jennifer Collins
 Stephanie Conway
 Debra Cordes
 Addie Cotton
 Audrey Crafton
 Makayla Culler
 Kelly Currie
 Andrew Danczyk
 Adrianna Daniel
 Monique Daniels
 Mary Daum
 Judy Dawson
 Ashley Devine

Robert Djai
 Paul Drake
 Jasmine Earvin
 Jennifer Earvin
 Patricia Eppel
 Tracy Everett
 Jennifer Fortkamp
 Kelsie Franke
 Vickie Goehri
 Delphine Graham
 Lakia Green
 Angela V. Griggs
 Heather Gutzler
 Ardelia Hall
 Jessica Halloran
 Arshena Harris
 Jacklyn Harris
 Patricia Harris
 Jennifer Hearn
 Vicky Hodge
 Brian Hokamp
 Andrea Huff
 Dawn E. Hurst
 Cindy Hustedt
 Stephanie Jackson
 Rita M. Johnson
 Stacie Johnson
 Geannette M. Jones
 Tritobia Jones
 Sarah Keller
 Christine Kinnison
 Susan Koesterer
 Jessica Kolkmeier
 Doug Krause
 Sandra Kroeschel
 Vicky Kueker
 Sheila S. Lawson
 Iwen Lee

Megan Logan
 Bernita Lomax
 Anne Lovelace
 David Lurk
 April Madden
 Carly Marsek
 Tia Marteen
 Ashlee Martin
 Jennifer Lynne Martin
 Tiffany Martin
 Heather McCauley
 Sheryl McClary
 Mary McCloud
 Timiko McDile
 Ian McKee
 Laurie Mercurio
 Tammela L. Merritt
 Patrick Moore
 Alisha Morris
 Alexandra Morton
 Shelley Moses
 Marsha Mount
 Esnath Mugambiwa
 Terry A. Nelson
 Amy Newtown
 Olivia O'Neill
 Terri Parks Watson
 Sandra Pena Stires
 Mandy S. Pickett
 Eric Pointer
 Lisa Randall
 Shontel Ray
 Danielle Redmon
 Marsha Reynolds
 William Rhinesmith
 Keshia Richardson
 Elizabeth A. Rittiss
 Tammy Roberts



Amy Robertson
 Cindy Robertson
 Zobrist Robin
 Theresa Robinson
 Dabney
 Teresa Rogers
 Rebecca Rojek
 Dawn Ruff
 Mario Rupert
 Carissa Russell
 Lisa Sackman
 Deborah Sanders
 Bryce A. Schindler
 Paulette Scott-Collins
 Lorraine Seiffert
 LaShonda Session
 Reynieka Sharp
 Dorothy Shaw
 Lauren Shaw
 Sherritha Short
 Christy Simmons
 Tanya K. Sisk
 Tosha Slaughter
 Antionette Smith
 Bridgette Smith

Connie Sommers
 Lori Soto
 Jill Specia
 Sonya St. James
 Trisha Stassi
 Kathryn Strope
 Stephanie N. Sumpter
 Kathy Swindle
 Kristin Sykes
 Endalkachew K. Tafere
 Alyssa Tardino
 Denise Marie Taylor
 Kimberly Taylor
 Casey Thomas
 Christina Thurman
 Gretchen Vollmer
 Martha Vonderheid
 Pooja Vyas
 Kristi Walkington
 Donna Wallner
 Jill Walter-Penn
 Quinn'Ella Watkins
 Brenda Wilbourne
 Jocelyn Wyms



Ways to Give

Christian Hospital Foundation's spirit and impact reflects our donors' passion to sustain our vital hospital and community programs and services. Christian Hospital continues to expand its programs and services to strengthen the health and wellness of our community. With your donation, you give the gift of health to our community that will have an impact for a lifetime.

Not sure where to start? Take a look at our unique ways to give.

Send a check

Mail a donation to our Foundation office at the address below. Or use the return envelope included.

Christian Hospital Foundation
11133 Dunn Rd., Ste. 300N
St. Louis, MO, 63136

Donate Online

christianhospital.org/Giving

Employer Matching Gift

Did you know that your gift could be doubled, tripled, even quadrupled? Many companies offer matching gift programs—your employer might be one of them! Matching gift programs enhance the giving power from individuals and their employer for the greater benefit of organizations like Christian Hospital Foundation. Ask your employer today about matching gifts.

Honor and Memorial Giving

A tribute gift is a meaningful way to convey sympathy to the bereaved, memorialize a loved one, commemorate a special occasion or honor a person's life and

accomplishments. Your gift to Christian Hospital Foundation made in honor or memory of this special person ensures a legacy that extends far into the future.

Grateful Patient Program

Donating to our Grateful Patient Program is a thoughtful way to recognize the excellent care you or a loved one received at Christian Hospital. This program enables you and your family to support programs, services and equipment that enhance the patient experience at Christian Hospital. Your health care hero will receive an award certificate and an honorary lapel pin to wear proudly. Please contact Necole Cheung at the Christian Hospital Foundation at 314-653-5035 for more information.

Donor-Advised Fund

A donor-advised fund (DAF) is a charitable giving vehicle administered by a sponsoring organization and created for the purpose of managing charitable donations on behalf of an organization, family or individual. It allows donors to make a charitable contribution, receive an immediate tax benefit, and then recommend grants from the fund over time.

Stock Donation/IRA Donation

Christian Hospital welcomes gifts of publicly traded securities, closely held securities, mutual funds, real estate investment trusts and bonds. This is a simple way to make a gift with minimum delay and expense with tax benefits to donors. We'll be happy to help facilitate the transfer process.

Contact Necole Cheung at 314-653-5035 or email at Necole.cheung@bjc.org before initiating a transfer.

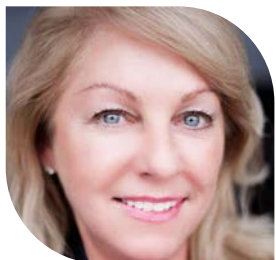
Planned Giving

Make a gift that leaves a lasting personal legacy at Christian Hospital. To discuss life-income and estate gifts, contact Necole Cheung at 314-653-5035. The Foundation accepts deferred gifts, including bequests, charitable gift annuities, charitable remainder trusts and charitable lead trusts.



The community visited Christian Hospital for education and health care screenings at the hospital's free Health Expo.

Welcome **New Board Members**



Trish Zupon

For 20 years, Trish Zupon has served as the membership director for the Clayton Chamber of Commerce, recruiting area businesses.

Currently, she is working at Lifestyle Homes with her fiancé, Nels Rosvall, building residential homes.

Trish believes Christian Hospital is an integral part of the St. Louis medical community providing excellent medical care and community outreach to ensure the best possible health and vitality of our citizens. Maximizing her experience, Trish plans to help Christian Hospital Foundation through her work on the Events and Fundraising Committees.

With an active lifestyle, Trish enjoys many activities but her favorites are traveling, gardening, cooking and skiing.



Lorenzo Boyd

Since 1992, Lorenzo Boyd has worked in securities and in varying capacities as an investment banker, including lead manager, financial

advisor, and structuring agent. Lorenzo's area of focus is Missouri K-12 education and general Missouri municipal finance.

Lorenzo is a sought-after lecturer for several Missouri K-12 organizations, including the Missouri Association of School Administrators ("MASA") and the Missouri Association of School Business Officials ("MoASBO"). He is an active member of numerous Missouri K-12 organizations, including the Missouri School Board's Association, MASA, and MoASBO.

Lorenzo is also an active member of community-based organizations and boards. He has previously served on the board of directors of the St. Louis Summer Finance Institute; Cardinal Glennon Children's Hospital Development Board; the Independence Center of St. Louis; the MoASBO; and the Professional Organization of Women.

Currently, Lorenzo is a member of the Character Plus for Schools board of directors.

Character Plus' mission is to develop positive character traits in young people by providing a high-quality character education process and resources to schools, homes, and communities. In addition, he is a member of the board of directors for the St. Louis Community College Foundation; the Boys and Girls Club of Greater St. Louis; and North County Inc.



Schron Jackson

Schron Jackson is the director of community engagement and customer care at Schnuck Markets, Inc., where she leads the company's

philanthropic and community engagement efforts while also overseeing the customer service call center. Schron is responsible for developing, promoting and executing cause related philanthropic efforts, including corporate giving, employee giving and volunteering. She also develops and executes comprehensive creative plans to engage internal and external stakeholders.

In addition, she oversees a yearly \$15 million food donation to Operation Food Search; leads Schnucks Corporate United Way Campaign; and collaborates with some of the region's leading nonprofit organizations such

as the Urban League of Metropolitan St. Louis, Operation Food Search, United Way of Greater St. Louis, The Salvation Army, and the American Red Cross.

Prior to joining Schnucks in August 2018, Schron spent 19 years as the public information manager for the St. Louis Metropolitan Police Department. Schron's husband, Raymond, is a police sergeant and a 30-year veteran of the St. Louis Police Department. Their son, Ryan, is also a St. Louis Police Officer and has been on the police force five years.

Schron holds a master's degree in communications and public relations from Webster University and a bachelor's degree in mass communications from Southern Illinois University-Edwardsville.

Leading with her heart and fueled by passion for helping people in need, Schron says joining the Christian Hospital Foundation Board was a natural alignment to continue impacting communities in need. She is inspired by the board's commitment to educating and providing valuable resources to ensure a safer and healthier community.

Schron enjoys volunteering, traveling, music, reading, interior design, and spending quality time with family and friends.

> *continued on page 28*

Tribute to Our Beloved Board Member and Friend

By Nicole Cheung, Executive Director, Christian Hospital Foundation



Emily Burch

It is an honor to write this tribute to Emily Burch—a friend, CH Foundation Board Member, great philanthropist, and a woman with a solid conviction to “bridge-build.”

When we first met Emily, I was intrigued by her infectious giggle and choice of words, such as benevolent, shazam, and groovy. I instantly thought her charismatic personality and pride in “bridge-building” in the service of people and commercial interests made her an ideal Christian Hospital Foundation board member.

This first encounter in 2021 marked the beginning of our Christian Hospital Foundation journey. Emily and her husband, Chris Zimmerman, chaired the highest-yielding gala in the Christian Hospital Foundation's history. She tirelessly recruited volunteers, raised proceeds, and encouraged her committee members, staff, and the Christian Hospital Foundation board to always strive for more.

Emily firmly believed that a rising tide floats all boats. She was committed to using her professional and personal background to focus on ways to contribute to St. Louis's growth and vibrancy.

We wish you farewell in your journey to eternity. Emily, you will always remain in our hearts and memories. It was a privilege for us to have you in our lives.



Rev. Cedric A. Portis Sr.

Rev. Cedric A. Portis Sr., an ordained minister, pastor, community leader, social change advocate, mentor, and

education partner, is well-known for his work to meet the spiritual, physical, and academic needs of his community. Dedicating years to public service, Rev. Portis uses his personal and professional resources to promote strong community partnerships, leadership in giving, and excellence in urban education.

Before becoming a full-time minister, Rev. Portis spent 14 years as an engineer where he played significant roles in public construction projects in St. Louis and was closely involved in social justice issues of minority inclusion and participation in public construction.

In 2003, Rev. Portis became the pastor of Third Presbyterian Church. In 2008, Rev. Portis was appointed police chaplain for the City of Moline Acres, a position he still holds. He received a Master of Divinity degree from Eden Theological Seminary in May 2012.

A member of the Riverview Gardens School District Community Advisory Committee, he has provided winter clothing to several schools, and he partners with the district in student enrichment programs. In the Hazelwood School District, Rev. Portis provided countless hours of mentorship and spiritual guidance for students in addition to chairing the district's annual Bright Futures Golf Tournament that has raised nearly \$100,000 for the Hazelwood School District Foundation.

From 2015-2019, Rev. Portis served as an executive officer on the Normandy Schools Collaborative Joint Executive Governing Board. During this tenure, Rev. Portis led the district in bringing about a culture change that resulted in the passing of a bond issue and the building a new \$14 million early childhood center, in addition to leading the district to regaining provisional accreditation. Under the leadership of Rev. Portis, Third Presbyterian Church continues to grow and make an impact in its community, most significantly through outreach programs for children.

Rev. Portis believes that the desired transformation of our communities will primarily come from churches accepting and executing their responsibility as resource providers to our communities. He received the 2016 Community Development Award from North County Inc. for positively benefiting youth and now serves on the North County Inc. Board.

In 2018, Rev. Portis received the Christian Hospital Foundation's Carpe Diem Award for his leadership, service and provision of resources to the St. Louis community.

Rev. Portis has been married for 29 years to Varonaki Portis, and they are parents to Cedric Portis Jr. In his spare time, Rev. Portis is an avid golfer, bowler, and weightlifter.

Thank You to Our Donors

Hamilton Ayars Heritage Society **\$100,000+**

BJC HealthCare
Christian Hospital Auxiliary
Cigna Health and Life Insurance
Company
Midwest Anesthesia Providers PC
Mr. & Mrs. David W. Otto
Dr. Sharad Parikh & Dr. Smita Parikh
Mr. & Mrs. Robert Plummer
Mr. & Mrs. George Scherer
Mr. Kelvin Westbrook &
Ms. Valerie Bell

Hamilton Ayars Society **\$50,000-\$99,999**

Boeing
Christian Hospital Medical Staff
Episcopal Presbyterian Health Trust
Memory Care Home Solutions
Midwest Radiological Associates PC
Mr. William Schnettgoecke &
Ms. Lisa Phelps
Dr. David Shaw
Dr. & Mrs. Hany Tadros
Mr. Donald J. Zykan

Benevolent Society **\$25,000-\$49,999**

Ameren Corporation
Dr. Olaronke Akintola
Centene Charitable Foundation
Christian Hospital Medical Staff
Deaconess Foundation
Express Scripts Foundation
Dr. & Mrs. Myron Jacobs
Mr. & Mrs. Steve Lipstein
Mallinckrodt Pharmaceuticals
Mr. Ronald McMullen &
Ms. Diane Makarewicz
Midwest Radiological Associates, P.C.
Dr. & Mrs. Gerald Moritz
Dr. Nabil A. Munfakh
North County, Inc.
Paul Cerame Auto Group
Dr. & Mrs. Antonio Penilla
Pulmonary Consultants, Inc.
Dr. Timothy Rearden & Dr. Chi Kim
St. Louis Cardiology Consultants, Inc.
St. Louis College of Pharmacy

St. Louis Heart and Vascular, P.C.
TeamHealth
Washington University in St. Louis

Lawton Circle **\$10,000-\$24,999**

Aetna Inc.
Analytical Pathology Services, LTD
Bazan Painting Co.
Mr. Mark J. Behlmann
Bethesda Health Group, Inc.
Dr. Melissa Brown & Mr. James Brown
Christian Hospital
Rev. Freddy J. Clark
Commercial Bank
Mr. & Mrs. Gerald Daniels
Mr. Walter Edwards
Dr. Ali Eldin
Emerson
Evtiv, LLC
Garden Plaza of Florissant
Mr. & Mrs. Edward L. Glotzbach
Handyman Hardware
Hazelwood School District
Healogics, Inc.
The Heart Care Group, Inc.
Hematology Oncology Consultants
Mr. Brian Hokamp
Mr. Richard Horning
Johnson Controls, Inc.
Dr. Surekha Joshi
Mr. & Mrs. William Konieczny
Dr. Christopher Kory
MAGNETIZE
Dr. & Mrs. Mario Marcinczyk
Mr. & Mrs. James D. Maurer
Dr. Juri McDowell
Mid-America Transplant Foundation
Mr. & Mrs. J.Y. Miller
Mr. & Mrs. James Moehle
Morrison Healthcare
Dr. Hilton I. Price
RARECAT Wines
Republic Services
Dr. Nadeem Rizvi, Esq.
Rotary Club of Florissant
R.P. Lumber Co.
Dr. & Mrs. Sebastian Rueckert
Mr. Thomas Saggio
Mr. & Mrs. Jim Schwartzkopf

Shalom Church City Of Peace
St. Louis Community College
Foundation
St. Louis Community Foundation
SWOG-CTI
ThyssenKrupp Elevator
Dr. Doris Tribune-Brown
Ms. Mary J. Trice
Dr. Erica Uppstrom & Mr. Mark Silver
Dr. & Mrs. Jacques Van Ryn
Volk Construction Company
Dr. Calvin Williams
Mr. Tim Woodard

Newstead Circle **\$5,000-\$9,999**

Abbott Laboratories
ABF Security, American
Burglary & Fire, Inc.
Alberici Constructors
Art By Golden/Golden Galleries
BDO USA, LLP
BJC Medical Group Specialists
of North County
Bade Roofing Co., Inc.
Dr. & Mrs. Mark Belew
Bommarito of Hazelwood-Nissan,
Honda, VW, Ford, Toyota
Dr. Mitra Boodram
Mr. & Mrs. Fred Brown
Mr. & Mrs. Henry Bruemmer
Dr. David Bryan
Dr. Arnold D. Bullock
Mrs. Sharon Campbell
Ms. Lisa Cannone
Cardiothoracic Surgery North LLC
Christ The King United Church
of Christ
Mr. Kevin Cheung &
Mrs. Necole Cheung
Mrs. Maxine Clark & Mr. Robert Fox
Clark-Fox Family Foundation
Commerce Bank
Complete Auto Body
Mr. & Mrs. Tom Cordia
Crothall Healthcare
D. H. Pace
Daikin-Thermal Mechanics
Delmar Gardens Management
Services
Employees Community Fund
of Boeing St. Louis
Mr. & Mrs. Lee Fetter
Guarantee GEICO Engineering
Mr. & Mrs. Bryan Hartwick
Mr. Cuong Hoang
Mr. Michael Holmes
International Brotherhood
of Electrical Workers Local No. 1
Dr. & Mrs. Joshua Jensen
KAI Enterprises
Kay-Bee Electric Co.
Mr. & Mrs. John J. Keith
Mrs. Susan Koesterer
Ms. Dawn Kotva
Lawrence Group Architects
of St. Louis, Inc.
Mr. William Londoff
Mr. William A. Long
Dr. Banti Manhanta &
Mr. Chandan Mahanta
M Property Services, LLC
Mr. & Mrs. David Malone
McClure Engineering
McGrath & Associates, Inc.
Mr. & Mrs. Paul McKee Jr.
Midland States Bank Foundation
Midwest Elevator Company
Mrs. Joyce Milligan
The Honorable Diane Monahan &
Mr. Joseph Monahan
Mrs. Barbara Murphy
Dr. Moyosore K. Onifade &
Dr. Akinrinola Fatoki
Dr. & Mrs. Ketan Patel
Peters-Eichler Mechanical, Inc.
Rev. & Mrs. Tommie Pierson
Mr. & Mrs. Chris Poindexter
Rhodey Construction
Ms. Stephanie Russell
Dr. & Mrs. Ravindra Shitut
Siteman Cancer Center
St. Louis Ambush
St. Louis Blues For Kids
Mr. & Mrs. Rick Stevens
Tarlton Corporation
United Church Of Christ
Mr. & Mrs. Virgil Van Trease
Visual Ingenuity, LLC
Mr. David P. Weiss & Mrs. Judy Burch
Dr. & Mrs. John Weltmer
Winspire
Dr. & Mrs. William D. Zweig

Trustee Circle **\$2,500-\$4,999**

Mr. & Mrs. Carlton Adams
Mr. & Mrs. Martin Akins
Alzheimer's Association
American Response Vehicles, Inc.
Anthem Inc.
BJC HealthCare Planning, Design,
Construction & Real Estate
BJC Medical Group
Dr. Christopher Beuer
Mr. Charles D. Black
Bloom Wine Tours
Bluegrass Lawn Care
Mr. & Mrs. James Brown
Mr. & Mrs. David Burch
CB&E Constructors
Celgene Corporation
CH Orthopedic & Spine Surgeons
Mr. Wayne J. Chambers
Cintas Corporation
Clayco Realty Group
Code Consultants, Inc.
Color Art
Commerce Bancshares Foundation
Crystal Creek Health and
Rehabilitation Center
Delmar Gardens North/
Garden Villas North
E. Meier Contracting
Edelen Door
Faultless Healthcare Linen
Fieldwork Quant Group
Fifth Third Bank
Florissant Rotary Club Foundation
Dr. Matthew Fraley
Genentech USA
Mr. Brad Goacher
Grainger
Greater North County Chamber
of Commerce
Mr. Michael Green
Dr. & Mrs. Charles Grimshaw
Ms. Rhonda Hamm-Niebruegge
Mr. Perry Hartwick
Heartland Coca-Cola
Bottling Company
Heideman Associates, Inc.
Helmkamp Construction Company
Ms. Michele Hoefl
Hutchens and Stygar Group LLC
Intalere
Jennings School District
Mr. Darryl Jones
Kaemmerlen Electric
Kirberg Company

Dr. Ravi Kotha
 Mr. & Mrs. Keith Lanier
 Mr. & Mrs. Gregg Liedtke
 Life Care Center of Bridgeton
 Mr. John Link &
 Mrs. Kathryn Kercher-Link
 Mr. & Mrs. James Lutzow
 Dr. & Mrs. David Margolis
 Mr. & Mrs. Jeffrey Maurer
 Mrs. Annette McCauley
 Ms. Lori McLennan
 Mr. & Mrs. Jaime Mendez
 Merritt Hawkins
 Midland States Bank
 Midwest Acute Care Consultants, PC
 Midwest Smiles Family Dentistry
 Mr. & Mrs. Steven B. Miller
 Moneta Group
 Mr. & Mrs. Howard Nimmons
 North County Emergency
 Physicians (ECI)
 Norwood Hills Country Club
 Dr. Olumide O. Ogunremi
 Mr. & Mrs. Joseph Orlet
 Mr. & Mrs. Keith Otto
 Mr. & Mrs. Don Pace
 Mr. Cesar Paredes
 The Pillars of North County
 Dr. & Mrs. Donovan Polack
 Progressive Waste Solutions
 Dr. Naveed Razzaque
 Rottler Pest & Lawn Solutions
 Dr. Mary A. Rudloff
 Mr. Jerry Sax
 St. Louis Cleaning and Restoration
 St. Louis Community College-
 Florissant Valley
 Stealth Creative
 Dr. & Mrs. Glen Stettin
 Steve Robbins, Inc.
 StoneBridge The Valley
 Mr. & Mrs. Michael Tucker
 Ultimate Machine Co.
 Village North Retirement Community
 Ms. Martha Vonderheid
 Washington University Dept.
 of Radiation Oncology
 Ms. Lori Weatherspoon
 Mr. & Mrs. Jack Weidinger
 Mr. Mike Wentz
 West Florissant Internists, Inc.
 Ms. Colleen Wilkerson
 Mr. & Mrs. James E. Williams
 ZOLL

**President's Circle
 \$1,000-\$2,499**

Dr. Mohamed Ali
 All Glass Cleaning
 Dr. Gerald Andriole
 Anheuser-Busch
 Aramark
 Mr. Ronald Ashby
 Associated Engineering Systems
 Dr. & Mrs. Kenneth Ausmer
 Mr. & Mrs. Jay Bartling
 Beecher Carlson Holdings, Inc.
 Mr. Scott Becker
 Mr. Mark Behlman
 Bentwood Nursing &
 Rehabilitation Center
 Big Sports Properties
 Biotronik/Heartcare Medical Systems
 BJC HealthCare
 BJC HealthCare Supply Chain
 Mr. & Mrs. Nick Bode
 The Honorable Dan Boyle &
 Ms. Christy Finsel
 Ms. Carla P. Bracken
 Mr. & Mrs. Steven Brncic
 Buckeye International
 Cleaning Center
 Mrs. Susan Buford
 Mr. & Mrs. Jeffery Call
 Cardinal Health
 CATCO
 Mr. & Mrs. Lee Cebollero
 Christian Hospital Human
 Resources Department
 ChronoTrack Systems Corp.
 City Of Florissant
 Clayton Valet
 Mr. Al Coffman
 Commerce Bank
 Commercial Flooring, Inc.
 Dr. Mackenzie Daly
 Dr. & Mrs. James L. Davis
 DaVita
 Decipher Biosciences
 Diane Anderson Photography
 Mr. Reginald Dickson
 Digestive Disease Specialists
 Mr. Warren Dill
 Mr. & Mrs. Michael Donnelly
 Dooley's Florist & Gifts
 Mr. Said Elfaridi
 Emerson Family YMCA
 The Empowerment Network
 EQ Health Solutions
 ESC New Media
 The Estates at Hidden Lake

The Estates Communities
 Exclusive Events, Inc.
 Mr. Jim Feldmann
 Fidelity Charitable Gift Fund
 Mr. Matthew Flick
 Florissant Valley Sheltered
 Workshop, Inc.
 Mr. & Mrs. Sylvester Flotte
 Fox Sports Midwest
 Gateway Region YMCA
 Dr. & Mrs. Thomas George
 Mr. John R. Gerth
 Glen Echo Country Club
 Mr. Randy Graham
 Greater Grace Church
 Haberberger Mechanical Inc.
 Haywood Hoesman Realty and
 H&H Brokerage Group
 Hedicorp Contracting, Inc.
 Hendel's
 Mr. & Mrs. Raymond Herbst
 Honey Baked Ham Company
 Mr. & Mrs. Dave Houston
 Mr. Robert Hussey
 Illini Medical Associates
 Ms. Rosetta D. James
 Janssen-Johnson & Johnson
 Bishop & Mrs. Larry O. Jones
 Kadean Construction
 Ms. Jayme Karenko
 Mr. & Mrs. Richard Knaup
 Mr. & Mrs. Ned Koprowski
 Lagunitas Brewing Company
 Dr. Richard Landgraf
 Ms. Susan Lang
 Mr. & Mrs. Tim Lee
 Leon Uniform Company
 Mr. & Mrs. Richard J. Liekweg
 Mr. & Mrs. John Londoff Jr.
 Louise M. Behlmann Trust
 Ms. Cheryl Lorenz
 Mr. & Mrs. Robert Lowery
 Luitpold Pharmaceuticals, Inc.
 Ms. April Madden
 MB Technology Solutions
 McClain Chiropractic
 Mrs. Sheryl McClary
 Ms. Tierra McCottrell
 Ms. Dorothy McGuffin
 Medtronic
 Ms. Tammela L. Merritt
 MHA Center for Education-
 Hero Fund
 Ms. Tina Minor
 MMS-A Medical Supply Company
 Mrs. Kathy Mollett



NALCO Water
 Negwer Materials
 Nimmons Wealth Management
 North St. Louis County General
 Surgery Inc.
 Dr. Ijeoma Carol Nwelue
 Mr. & Mrs. Fred Oertli
 Dr. & Mrs. Richard O'Neill
 Mr. Steven P. Osborne
 Mr. & Mrs. Glenn Otto
 Ms. Peggy Pace
 Padawer Bratton Wealth
 Management of Raymond James
 The Pasta House Co.
 Pfizer, Inc.
 Philips Healthcare
 Phoenix Textile Corporation
 Mr. Kyle Pickett
 Dr. Jeff Pittman
 PJM Consulting, Inc.
 Ms. Kamille J. Pope
 Plumbers & Pipefitters Local 562

PRP Wine International
 Dr. & Mrs. Nishant V. Raj
 Mr. Harry Ratliff
 Resler-Kerber Optometry, Inc.
 Mr. Eric Rhone
 Right At Home St. Louis
 Dr. Catherine Roane-Blaker
 & Mr. Ronald Blaker
 Dr. Mary A. Rudloff
 Mr. Richard Ryffell
 S. M. Wilson & Co.
 Sanofi-Aventis
 Mr. Kurt Schneider
 Mr. & Mrs. Matthew Sellers
 Seniors Helping Seniors
 Mr. Lee Shields
 Dr. & Mrs. Thomas Shine
 Dr. & Mrs. Adnan Y. Siddiqui
 & Dr. Mehreen Khann
 Dr. Toniya Singh
 Mr. Steve Slapshak
 Spire Energy

Spirtas Wrecking
SSC Engineering, Inc.
St. Louis Auto Dealers Association
St. Louis Blues
St. Louis Children's Hospital
St. Louis Community Credit Union
Mr. Antonio D. Stewart
TEI Medical
Third Presbyterian Church
Trinity Catholic High School
Dr. Rance Thomas
Tucker Tire Service, Inc.
Mr. & Mrs. Robert Tomaso
Mr. & Mrs. Kennard Tucker
Unity Hospice, L.P.
The University of Michigan
The Urban League of Metropolitan
St. Louis
Valley Industries
Dr. & Mrs. Garry Vickar
Mr. David W. Volk Jr.
Walt Disney World Resort
Mr. & Mrs. Melvin Waier
Dr. Mark Wald
Sen. Regina M. Walsh
Weber Chevrolet Granite City
Mr. Brian Whorley
Ms. Anita Wilson
Mr. & Mrs. Jeffrey Wist
Wright Medical Technologies
YWCA Metro Saint Louis
Ziege-Mueller Drywall & Construction
Dr. Meng Zhao

Director's Club
\$500-\$999

Dr. Raymond Abdo
Dr. Rasheed Abiola
Alliance Data
American Multispecialty Group, Inc.
Mr. Glenn Appelbaum
Mr. & Mrs. Terry Artis
Ms. Jane Ashner
The Bank of America Charitable
Foundation, Inc.
Mr. Dennis Beausang
Bender Printing
Mr. Warren R. Betts
Dr. Leon Bialecki
Mrs. Mindy Bingham
BJC Medical Group Cardiology
Mr. Chris Blankemeyer
Dr. & Mrs. Richard Blath
Boain Dental Care
Ms. Sheryl Bonsett
Bowers & Associates

Mr. John Bowman
Ms. Adrian Bracy
Broadway Fitness
Mr. & Mrs. Fred Buchholz
Mr. & Mrs. Jason Burcke
Mr. Christopher Buzzetta
Mrs. Sandra Buzzetta
Ms. Gwen Cabe
Mr. P. Herbert Caldwell
Caring Hearts Agency, Inc.
Centene Management Company, LLC
Chesterfield Park Dental
Chris Cakes STL
City of Woodson Terrace
Confluence Life Sciences, Inc.
Mr. & Mrs. Daron Copp
Mr. Steven Costley
Ms. Judy Dawson
Dr. & Mrs. Paul Detrick
Mr. Dusty Diekman
Doozle's
Mr. & Mrs. Jeffrey Dossett
Dr. Matthew E. Duban
Enterprise Holdings
Ms. Patricia Eppel
Esse Health
Mr. Steve G. Farkas
Mr. James H. Foley
Four Seasons Hotel St. Louis
Frito-Lay
Dr. Gena Gardiner &
Mr. Robert Gardiner
Dr. Jacquelyn Garrett
Mr. & Mrs. John Gianoulakis
Mr. Dave Gislason
Mr. & Mrs. Gilbert Goehri
Mr. & Mrs. Gary Goldstein
GoodEye PhotoShare
Gori, Julian & Associates, P.C.
Mr. James Graham &
Kathleen McKerny
Grant Hickman Real Estate Advisors
Greater St. Louis Chapter Tennessee
State Alumni
Greater St. Mark Family Church
Grey Eagle Distributors
Mr. & Mrs. Richard L. Griffith
Ms. Alice Haberman
Ms. Millie Hancock
Mrs. Carol Hemker
Mr. John Hessel
Mr. Allen Hibbett
Mr. Christopher High
Mr. Kyle Hogan
Mr. Don M. Holt
HomeTeam Transition Management
Group, LLC

The House of Deliverance Church
HSI
Impact Strategies, Inc.
Improved Performance Inc.
Mr. & Mrs. Ronald Johnson
Bishop Courtney A. Jones
Just Landscape Lighting
Mr. & Mrs. John Katsianis
Dr. & Mrs. Gregory S. King
Ms. Christine Kinnison
KMOV
Mr. & Mrs. David Kucharczyk
Kurt Warner First Things First
Foundation
Ms. Patricia J. Landrum
Lasting Impressions Home
Remodel Center, LTD.
Dr. Armond Levy
The Little Bit Foundation
Dr. Melissa Lueking
Major Brands Distributing
Dr. & Mrs. Robert Margolis
Mr. Joe McMillen
Mr. & Mrs. James McNeil
Mercedes Benz Club Of America
Ms. Melissa Merlin
Midwest Bank Centre
Mrs. Barbara Miner
Mr. & Mrs. Mark Moehlenkamp
Ms. Kay Morgan
Mother Of Good Counsel Home
Mrs. Marisa Murray
Musical Productions, LTD.
Ms. Alta G. Myers
NAACP St. Louis County
Dr. Gena Napier & Mr. Kelby Napier
Nature's Bakery
Mr. & Mrs. Ronald Neal
Ms. Amy Newtown
North County Churches Uniting for
Racial Harmony and Justice
Ms. Mary Anne O'Connell
Old Town Donuts
Dr. Aaron Omotola
Ms. Olivia O'Neill
Mr. & Mrs. Dave Overstreet
Mr. & Mrs. Gerald Padawer
Mr. Everett Page
Paric Corporation
Dr. Sharad Parikh
The Parking Spot
Dr. Kimberly Perry &
Mr. Christopher Perry
Ms. Phelps
The Honorable Tommie Pierson Jr.
Ms. Susan Pilson

Mr. & Mrs. Steven Player
Ms. Vaneesa Presley
Promotions Pronto
R.F. Meeh Company
Rancho Manor Healthcare and
Rehab Center, LLC
Ranken Jordan Pediatric
Bridge Hospital
Ms. Stacey Reed
Regions Bank
Ms. Stephanie Reynolds
Riverview Gardens School District
Mrs. Kirwin Roach
Ms. Sandra Roy
Dr. Ramulu Samudrala &
Dr. Suseela Samudrala
Mr. Timothy Schrader
Ms. Selma Schweigert
Select Orthopedics
Select Specialty Hospital-St. Louis
Mr. Justin Setser
Ms. Brenda Sexson
Mrs. Catherine Simmons
Ms. Kelly Simonds
Six Flags Friends
Mr. & Mrs. Gregory Smith
Mr. Christopher Smith
Ms. Anne Solari
Southern Glazer's Wine & Spirits
Mr. & Mrs. Lonnie Spight
Ms. Jean Springmeier
St. Jude Medical, Inc.
St. Louis Economic Development
Partnership
St. Louis Graduate Medical
Education Consortium
Saint Louis Zoo
Stericycle, Inc.
Mr. & Mrs. Drexal Stith
Rev. Carleton Stock &
Rev. Elinor J. Stock
StoneTree Fabrications
Tech Electronics
University Of Missouri-St. Louis
Upsilon Omega Chapter of Omega
Psi Phi Fraternity Inc.
Urban Chestnut Brewing Company
Ms. Trish Vassar
The Villa At Riverwood
Villa Lighting
Mr. Joe Vitale
VITAS Healthcare
Vocera
Ms. Gretchen Vollmer
Mr. & Mrs. Mark Voudrie
Mr. & Mrs. A.J. Wade

Ms. Sara E. Wade
Mrs. Jill Walter-Penn
Washington University
Surgical Group
Mr. & Mrs. Michael Watson
Webster University
Wells Fargo Advisors, LLC
The Honorable Mr. & Mrs. Wharton
Ms. Victoria Wheeler
Ms. Anita Wilson
Ms. Ruth Winkelmann
Mr. & Mrs. Jack Yacovelli
ZAMBU Vodka

Century Club Fellow
\$250-\$499

Dr. Nagla Abdelmalek
Dr. Gaudencio R. Agasino &
Dr. Amela Agasino
Agendia
Dr. Nadeem Ahmed
American Emergency Vehicles
American Heart Association
Amore Pizza
Mr. Jesus Arce
Armstrong Medical Industries
Ms. Lisa Avenevoli
Mr. & Mrs. James Avery
Mr. Sam Bae
Ms. Shelia M. Bailey-Smith
Balcknobbers Theatre
Mr. Richard Bayers
Mr. Walter Bazan Jr.
Mrs. Teri Bequette
Mr. Bret Berigan
Bethesda Temple Church
of the Apostolic Faith, Inc.
BJC Home Care
BJC Sports and Orthopedic Clinic
Rev. Traci Blackmon
Ms. Vera Booker
Ms. Heather Bowker
Boy Scouts of America
Boyle Law Firm LLC
Mr. & Mrs. Patrick Boyle
Boys & Girls Clubs of Greater
St. Louis
Branson IMAX Entertainment Center
Mr. Patrick Britt
Budrovich Excavating, Inc.
Business Centers of Missouri, Inc.
Ms. Gloria Campbell
Mr. Nathan Cannon
Mr. Mark Carlie
Mrs. Lillian V. Carr
Carron Construction LLC

Ms. Candice Cave
 Challenge Unlimited, Inc.
 Chandler Hill Vineyards
 Mr. Randall Cheatham
 Chick-Fil-A
 City of Bellefontaine Neighbors
 Mrs. Lora B. Click
 Mr. & Mrs. Justin Costley
 County Oncologist, Inc.
 Mr. & Mrs. Ralph Crawford
 Cushman & Wakefield
 Mr. & Mrs. Philip T. Daniels
 Rev. & Mrs. James Daugherty
 Mr. & Mrs. Robert Davenport
 Delta Center
 Attorney JoAnn Donovan &
 Mr. Keith Took
 Dr. Victoria J. Dorr
 The Honorable Mary E. Dorsey
 Mrs. Gaylene Dunn
 Ms. Ronda Dunson
 Ed Roehr Safety Products
 The Honorable & Mrs. Jimmie
 Edwards
 Family United Home Health And
 Adult Day Center
 Ms. Beth Fauser
 Mr. Ezra Feig
 Florissant Garage & Radiator
 Mr. & Mrs. Marcial N. Floro
 Dr. Bradley Freeman & Dr. Hannah Ha
 Ms. Joan C. Fromme
 Ms. Donna Garrett
 Get Well Family Chiropractic
 Golf Tec
 Grand Country Music Hall
 Gunther Salt Company
 Ms. Jeanalyn Guthrie
 Dr. Lannis Hall
 Mr. & Mrs. Antonious Hammond
 Mr. & Mrs. Thomas J. Harrell
 Ms. Patricia Harris
 Dr. & Mrs. Joseph Hazan
 Hilti North America
 Mr. Daniel E. Holshouser
 Howell Family Practice PC
 Mr. Oliver G. Hucker
 Ms. Catherine Hunt
 Ms. Dawn E. Hurst
 Mrs. Margaret Hutchison
 Innovative Management Associates
 Jack Schmitt Valet Car Wash
 Mr. Nick Jacobs
 Ms. Nancy L. Jaurigui
 Mr. & Mrs. Mark Jenkins
 Ms. Rita M. Johnson

Ms. Geannette M. Jones
 Kansas City Chiefs
 Dr. Siddharth Kaul
 Mrs. Kathleen Kellett
 KCI
 Mr. Kevin R. Kelly
 Dr. & Mrs. Peter Kieffer
 Ms. Rosemary Kinder
 Kindred at Home
 Kindred Hospice
 Mr. David Klein
 Dr. James Kloefoth
 Mr. Brian Kohnen
 Ms. Sandra Kroeschel
 Ms. Joan Lamping
 Mr. & Mrs. Carl Lang
 Mr. Paul Lauschke
 Legacy Care LLC
 Mr. Josh Loeffler
 Ms. Gwendolyn Logan
 Ms. Mary Ann Lombardo
 Lutheran High School Association
 of St. Louis
 The Lutzow Law Firm LLC
 Ms. Nancy Lydon
 Ms. Debbie Mack
 Dr. Azfar Malik
 Ms. Amber Mangrum
 Mastermind Vodka
 Mr. Dan Matter
 Mr. Terry McDonald
 Mr. & Mrs. Chris McKee
 Mr. & Mrs. Deon McKenzie
 MGM LLC Saint Sophia Healthcare
 Ms. Barbara J. Mikoff
 Missouri Botanical Garden
 Mrs. Mary Etta Montes
 Mr. Patrick Moore
 MPGTandem
 Mr. & Mrs. Edward F. Mundel
 Ms. Stacey Muskopf
 Dr. James Nahlik
 Dr. Daniel J. Nassif
 National Electrical Construction Co.
 Mr. & Mrs. Joseph A. Naumann
 Dr. Laxmeesh Nayak
 Nestle Purina PetCare Company
 Ms. Rebecca Niebruegge
 Norris Injury Lawyers, P.C.
 Oreo and Botta Concrete
 Ms. Alberta Owens
 Panera Bread
 Col. & Mrs. Larry D. Payton
 Ms. Laura Phelan
 Phoenix-Metro Of St. Louis, Inc.
 Mr. & Mrs. Daniell Pickett

Pirrone's Pizzeria
 Mr. Norman Plender
 Premier Rentals
 Ms. Lisa Pyatt
 Dr. Usman Qayyum
 Mr. David Queller
 QuikTrip Corporation
 Mr. & Mrs. Charles Rathert
 Ms. Jane Reis
 Repertory Theatre St. Louis
 Ms. Angela Roberts
 Ms. Kim Robinson
 Ms. Teresa Rogers
 Mr. Oliver Rolfe
 Ms. Katherine Romack
 Mr. Matthew Ruengert
 Mr. Kevin Ryan
 Mr. & Mrs. Robert M. Rybacki
 The Salvation Army
 Sana Lake Recovery Center
 Ms. Deborah Sanders
 The Sarah Community
 Mr. David Sauerburger
 Mr. & Mrs. Dale Schillinger
 Schlafly The Saint Louis Brewery
 Mr. & Mrs. Ron Schmidt
 Mayor Thomas P. Schneider
 Schwartzkopf Printing, Inc.
 Mr. & Mrs. Harold Scott
 Dr. Harvey Serota &
 Mrs. Elena Zaiats-Serota
 Mr. & Mrs. Aaron Seward
 Sight & Sound Theatres
 Dr. & Mrs. Joseph R. Simpson
 Siteman/Washington University
 PECaD
 Six Flags St. Louis
 Mrs. Gladys Smith
 Soft Touch Home Care
 St. Louis Union Station Hotel,
 Curio Collection by Hilton
 St. Sophia Health and Rehab
 Ms. Constance Stafford
 StarResource HomeCare
 Mr. Jay Steinback
 Ms. Stephanie N. Sumpter
 Ms. Marilyn Telowitz
 Mr. Anthony Thompson
 Ms. Vetta L. Thompson
 Mrs. Christina Thurman
 Mr. Tom Tokarczyk
 Ms. LaTisha Tompkins
 Mr. & Mrs. Keith Took
 Mr. Raymond Trautman
 Mrs. Elizabeth A. Trimble
 Tri-Tec, Inc.

Verve Design Studio, Inc.
 Mr. Artur Wagrodzki
 Mr. Fred Waldrop
 Mr. & Mrs. Tim Walker
 Mr. Don Walsh
 Mr. & Mrs. Harold Walters
 Ms. Ethel Washington
 Waterway Carwash
 Ms. Felicia Watkins
 Dr. Roger Waxelman & Mrs. Christy
 Hoff-Waxelman
 Mr. Steven Wedel
 Well Home Agency
 Mr. Jerry West
 Mr. Kenneth Wheat
 Mr. Randy Wild
 Ms. Rachel Williams
 The Worship Center Christian Church
 Mr. John J. Zeman
 Mr. Matt Zimmerman

Century Club
\$100-\$249

801 Fish
 ACI Boland Architects
 Ms. Lora Ackermann
 Adam Puchta And
 Son Wine Company
 Advantage Waypoint
 Mr. Tim Albers
 Dr. Christopher Aldridge
 Algonquin Nurses Home
 Health Care I, LLC
 Ms. Marilyn Allen
 An Olive Ovation
 Mr. Eric Anderson
 Applied Scholastics International
 Mr. Bruce Arbogast
 Autumn View Gardens
 at Schuetz Road
 Avocado Tea Company
 B & B Heating & Cooling, Inc.
 Dr. & Mrs. Steven Baak
 Mrs. Geraldine Baker
 Mrs. Kim Bakker
 Mr. & Mrs. Ed Ballinger
 Representative Gretchen Bangert
 Mr. Joseph Banks
 Mr. & Mrs. Melvin Barach
 Ms. Patricia Barnes
 Mr. Charles Bauer
 Mrs. Frances Bauer
 Mr. Steven Bauer
 Mr. & Mrs. Leonard A. Bayens
 Mr. Rick Bazan
 BBJ Linen

Ms. Lorraine B. Beamon
 Mr. Dan Behlmann
 Mrs. Traci A. Bell
 Mrs. Sandy Bell
 Ms. Amanda Bemis
 Mr. & Mrs. Earl C. Berry
 Mr. & Mrs. Vincent Beseaw
 Mr. Frank Bick
 Ms. Lorri Binger
 BJC Medical Group-Convenient Care
 BKM Bootkamp
 Black Jack Fire Protection District
 Blanche M. Touhill Performing
 Arts Center
 Mr. Matthew Boisclair
 Dr. Naveen Bondalapati
 Ms. Darlynn Bosley
 Mr. Dennis Boyer
 Mr. Kevin Bray
 Mr. Ian Breden
 Mr. Fabio Brito
 Mr. Joseph A. Brooks
 Mr. David Brown
 Ms. Brenda Brown
 Mr. Eddie L. Brown
 Ms. Marie G. Brown
 Mr. & Mrs. Wendell Brown
 Buckets And Boards
 Bill Bush, Massage Therapist
 Ms. Kathleen Buzzetta
 Mr. & Mrs. Ryan C. Byrnes
 Ms. Alice Caldwell
 Calloway Services
 Mr. & Mrs. Gregory H. Campbell
 Mr. Jon Caron
 Carpenters' District Council of
 Greater St. Louis & Vicinity
 Ms. Danielle Carre
 Mr. and Mrs. Charles Carson
 Mr. Alford Catching
 Center for Hope And
 Healing Counseling
 Mr. Donald Ceresia
 Dr. & Mrs. Bernard Chaitman
 Dr. Sidharth Chandra
 Mr. & Mrs. Paul Chapman
 Ms. Yvette Cheaney
 Cheesecake Factory
 Mr. Andy Cherry
 Ms. Leann Chilton
 Mr. Richard Chong
 Mr. Wallace Christian
 Dr. David Chung
 Ms. Lisa A. Clark
 Clay Cooper Theatre
 Mr. & Mrs. Cockell

Mr. Mitch Coleman
 Mr. Rasheen Coleman
 Collier Bros. Auto Body Co., Inc.
 Comfort Hospice
 Ms. Patricia Conley
 Ms. Margaret J. Cook
 Mr. & Mrs. Philip Cooper
 Cooper's Hawk Restaurant
 and Winery
 Mr. Roger Cope
 Ms. Marilyn Crawshaw
 Crest Bar & Grill Inc
 Mr. Rodney Crim
 Mr. Thomas P. Curran
 Ms. Mary Ann Dailey
 Mr. & Mrs. William M. Dale
 Mr. & Mrs. Gregory Daniels
 Dave & Buster's
 Mr. Tyrone Davis
 Ms. Danyal Davis
 Ms. Reva Davis
 Mr. David S. Davis
 Mr. Thomas Day
 Mr. Carl Deavens
 Deaver's Sports Bar and Restaurant
 Mr. & Mrs. Theofore Deibel
 DeSmet Retirement Community
 Ms. Linda Detrick-Umbright
 Ms. Jo DiSalvo
 Mr. Robert Djai
 Mr. & Mrs. Charles Dodd
 Dogtown Pizza
 Ms. Cynthia Donato
 Mr. Charlie Dooley
 Drury Hotels
 Dr. Blonie Dudney
 Ms. Rebecca Duich
 Dr. Mitchell Durante
 Mr. & Mrs. Charles Dye
 Mr. Thomas Early
 Mr. & Mrs. Keith Easley
 Mr. & Mrs. Richard Easley
 Mr. & Mrs. Steve Easley
 Mr. Bobby Eaton
 Mr. Roger Ellison
 Ms. Timica Emerson
 Mr. Kurt Englander
 Mr. & Mrs. James Ervin
 Fabulous Fox Theatre
 Mr. & Mrs. Jason A. Fank
 Federation of Catholic Schools
 in the Northeast Deanery
 Ferguson-Florissant School District
 Mr. Dane Fitzpatrick
 Float STL
 Florissant Psychological Services

Florissant Valley Health & Rehab
 Ford Hotel Supply
 Mr. & Mrs. Craig Fowler
 Mr. Steve Frank
 Ms. April Fry
 Funny Bone Comedy Club
 Ms. Tiffany Gallo
 Mr. & Mrs. Walter J. Galvin
 General Learning Communication
 Mr. William V. Gibson
 Ginger Bay Salon and Spa
 Mr. & Mrs. Paul Goldstein
 Mr. & Mrs. Henry S. Graham
 Ms. Melissa Grannum
 Ms. Vivian Graves
 Ms. Teresa A. Green
 Mr. Mark Greenspahn
 Ms. Angela V. Griggs
 Mr. Gabe Grossberg
 Mr. David Gulick
 Mrs. Margaret Gunn
 Mr. Jim Guyre
 Hair'em Backdoor LLC
 Ms. Ardelia Hall
 Halo Branded Solutions
 Mr. Daniel Hamill
 Mr. Jason Haney
 Mrs. Rosemary Hanley
 Ms. Ethel Harris
 Mr. Christopher A. Harris
 Ms. Nancy Hartman
 Ms. Karen L. Hathaway
 Hawthorne Players
 Ms. Lee Haynes
 Ms. Esther Haywood
 Mr. & Mrs. Robert Heideman
 Helium Comedy Club
 Mr. & Mrs. Dennis Henke
 Hermannhof Vineyards
 Mr. Dylan Hill
 Hilton St. Louis
 Mr. & Mrs. Hinrichs
 Dr. & Mrs. William Hoffman
 Ms. Susan Hofmann
 Mrs. LaVonzell Holt
 Home Instead Senior Care-St. Louis
 Ms. Debra Houston
 Mr. Chris Huddleston
 Mr. & Mrs. Joshua Hunter
 Ms. Patricia Hutchinson
 Mr. James Igo
 Mr. Rusty Ingram
 It's All About Home, LLC
 Ms. Lois Jackson
 Mr. & Mrs. Melvin Jennings
 Dr. Vincent Q. Joe

Mr. Lectoy Johnson
 Ms. Magnolia Johnson
 Dr. Lynelle Johnson
 Mr. Jayson Jones
 Ms. Kathy Joslin
 Mr. Jesse Kahlon
 Mr. & Mrs. Mark Kallal
 Dr. Saul Kalvaitis
 Kansas City Royals
 Kansas City Zoo
 Dr. Chandra Kaup
 Mr. & Mrs. Richard Kellett
 Kendra Scott
 Mr. & Mrs. Kidney
 Mr. Jesii Kimani
 Dr. Anthony King
 Ms. Lillie B. King
 Mr. Phillip Kiriboon
 Mr. & Mrs. Edward Klenc
 Kling Kamera Photography
 Mr. & Mrs. David Knocke
 Ms. Lucile Koester
 Mr. & Mrs. Jeffrey Kohler
 Mr. John Kohnen
 Dr. Sivasankara Konala
 Korte's Custom Framing
 Mr. & Mrs. Wilfred J. Krenn
 Mr. Dennis Kuhl
 Mr. Josh Landau
 Mr. Carletus Lathan
 Mr. & Mrs. James Laughlin
 Ms. Elizabeth Lawson
 Learning for Life/Boy Scouts
 of America
 Mr. & Mrs. Elvin Ledet
 Ms. Barbara Lehmann
 Mr. Richard Lessnau
 Dr. & Mrs. Nat Levy
 Ms. Jeanette Levy
 Ms. Jane Licklider
 Mr. Mike Linder
 Ms. Carol Lockhart
 Mr. James E. Long
 Lost Creek Vineyard
 Mr. & Mrs. John Love
 Mr. Lon Lowrey
 Mr. Kevin Maczka
 Madison County Urban League
 Mr. Tariq Malik
 Ms. Pamela C. Mandelker
 Dr. Manolo Mapa
 Martin Brothers Winery
 Mr. Carl Martinson
 Ms. Carolyn Marty
 Massage Envy
 Mr. & Mrs. George A Match



Mr. David Maul
 Dr. Nicholas Mayer
 Mayo Clinic
 Mr. & Mrs. McCafferty
 Mr. Daniel Mccall
 Mr. & Mrs. Timothy McCauley
 Mrs. Alisha McCoy
 Ms. Sylvia McDonald
 Mr. & Mrs. Kevin McKee
 Mr. & Mrs. Charles McKee
 Mr. Kevin McKenna
 Mr. & Mrs. Deon McKenzie
 Ms. Winifred McMullen
 Mr. Robert Menichino
 Ms. Laurie Mercurio
 Ms. Janet K. Meyer
 Mr. & Mrs. Edward Meyer
 Mr. Wilbert G. Meyer
 Mr. Gus Miles
 Mr. Mark Miller
 Mr. & Mrs. Jim Milner
 Mississippi Valley Roofing, Inc.

Ms. Chanel Mitchell
 Mr. & Mrs. Mooney
 Mr. Rufus Moore
 Ms. Magdalene Moore
 Dr. & Mrs. Duane Moore
 Ms. Nancy Moritz
 Mr. Mike Muentner
 Ms. Virginia R. Mulanax
 Ms. Suzy E. Muller
 Ms. Nancy Murnin
 Dr. Latha M. Myla
 Ms. Donna Nadler
 Dr. Seema Najam
 National Association Of Health
 Service Executives-St. Louis
 Ms. Terry A. Nelson
 Mr. & Mrs. Michael Nielsen
 Mr. James Norberg
 Ms. Erica Norman
 Normandy Schools Collaborative
 Mr. & Mrs. Carlton Norton
 Mr. Fidel Nwamu

Mr. & Mrs. Lester Ogle
 Mr. & Mrs. Jack Olson
 Mr. & Mrs. Jack Olson
 Mr. Joe Olwig
 Mr. & Mrs. Mike O'Mara
 Dr. Patrick Oruwari
 Osage Marketing
 Ms. Doris J. Otojareri
 Mr. & Mrs. Brian Otto
 Mr. Thomas Ousley
 Mr. & Mrs. Robert Owens
 Mr. Tony Palmer
 Mr. & Mrs. Lewis E. Parker
 Mr. & Mrs. Lewis E. Parker
 Patterson Dental Supply
 Mr. William Paul
 Mr. David G. Paulton
 Ms. Doris Peckron
 Mr. James Peltekis
 Dr. & Mrs. Greg Penilla
 Mr. & Mrs. Ramon Penilla
 PepsiCo Foodservice
 Dr. Elizabeth M. Perkins
 Mrs. Luella Perry
 Mr. & Mrs. Sylvester Petty
 Mr. Steve Phillips
 Mrs. JoAnne Pieczynski
 Ms. Ann Pierce
 Pioneer Environmental Services
 Pitney Bowes
 Pleasant Grove Church
 Polsinelli
 Rev. Cedric A. Portis
 Mr. Bradley Purcell
 Ms. Nancy Quade
 Mr. Kevin Quigley
 Radiant Life in Christ
 Apostolic Church
 Raging Rivers WaterPark
 Raising Cane's
 Dr. Sam Rana
 Mr. & Mrs. Herschell Randall
 Dr. Savitha Rao
 Mr. & Mrs. Timothy Ray
 Remy Cointreau USA
 Mr. Mark Reynolds
 Ms. Glenda Rice
 Mr. Larry Richardson
 Mr. Steven D. Richardson
 Mr. Beau Richmond
 Ms. Virginia Rigdon
 Mr. Jerry Ritter
 River City Rascals
 Professional Baseball
 Mr. Kevin M. Roach

Mr. Matthew Robinson
 Mrs. Alicia Rodgers
 Mr. Mark B. Rogers
 Ms. Mildred Rollins
 Dr. & Mrs. John Rollo
 Dr. Michael Rominger
 Mrs. Marian Rosegrant
 Mr. Zev Rosenberg
 Mr. Jon Rosenstengel
 Dr. & Mrs. Gene Roxas
 RubinBrown LLP
 Mr. Tyler Ruby
 Mr. & Mrs. William Rusnack
 Mr. & Mrs. Leland Sackmann
 Saint Louis University
 Mr. Edward Sanford
 Mr. Michael Schaeffer
 Mr. Michael Schlueter
 Mr. Scott Schneider
 Mr. & Mrs. Marty Schuettenberg
 Mr. Anthony Schulz
 Ms. LaShonda Sessions
 Ms. Angela Shanks
 Dr. & Mrs. Gerald Shatz
 Mr. & Mrs. Kevin J. Sheehan
 Ms. Mildred Shelton
 Shoji Entertainments, Inc.
 Mr. John Sholar
 Show-Me's Restaurant
 Dr. Eli Shuter
 Ms. Becky Simpson
 Mr. Christian Sinclair
 Dr. Gurcharan Singh
 Ms. Debra Sitton
 Mr. Ronald H. Slaughter
 Mr. & Mrs. Pat Sly
 Ms. Susan Smith
 Mr. Pat Smith
 Ms. Shari Smith
 Mr. & Mrs. Sobocinski
 Ms. Connie Sommers
 Mr. James Sosnoff
 Ms. LaVerna Spinks
 Ms. Kay Spring
 St. Andrew United Methodist Church
 St. James AME Church
 St. Louis Art Museum
 St. Louis Classical Guitar
 St. Louis County Missouri
 St. Louis Urological Surgeons, Inc.
 Mr. & Mrs. Eric Stafford
 Stages St. Louis
 Starbucks
 State of Missouri
 Stefanina's Pizza



Christian Hospital Neurosurgery Center ribbon-cutting ceremony opens the door to more expertise close to home.

Mr. Ryan Steinbach
 Stone Tree Fabrications
 StoneBridge Senior Living
 Mrs. Kathi Streiler
 Ms. Kathryn Strope
 Ms. Patricia A. Struckel
 Mr. Steve Stygar
 Mr. & Mrs. Michael Suffian
 Mr. & Mrs. Robert Summers
 Summers Printing Co. Inc.
 Summit Distributing
 Mrs. Regenia Sutton
 Mr. & Mrs. Joe W. Sykes
 Ms. Stephanie Syler
 Mr. Mark Tamboli
 Mr. Magnus Tannfelt
 Dr. Robert Tarr
 Ms. Kimberly Taylor
 Ms. Denise Marie Taylor
 Team Select Home Care
 Mr. Darrin Tessmer
 Ms. Lena Thai
 The Magic House
 The Murnin Group
 Mr. Kenneth Thomas
 Ms. Kathleen Thomas
 Mrs. Barbara Thompson

TJS Fitness-Curves
 Mr. Phu To
 Total Wine & More
 Mr. Kenny Truong
 Mr. & Mrs. Rick Uhlenbrock
 Mr. Felix Ungacta
 United Health Care
 Upper Limits Rock Gym
 Mr. Kurt Valdez
 Mr. Kurtis Van Allen
 Mr. & Mrs. William Van Bokkelen
 Ms. Carlita Vasser
 Villages of St. Peters Memory Care
 Mr. Mark L. Visnovske
 Mr. William W. Wallace
 Ms. Elizabeth Wallingford
 Washington Metropolitan A.M.E.
 Zion Church
 Ms. Jennifer Werner
 Mr. & Mrs. Buzz Westfall
 Mrs. Ruby Whitaker
 Mr. Philip White
 Ms. Ruth V. White
 Bishop Samuel White
 Dr. Richard White
 Mr. Gary W. White
 White Mule Winery

Mrs. Kara Whittaker
 Mr. Jacob Wieneke
 Mr. Robert Williams
 Mr. & Mrs. John Williams
 Mr. & Mrs. Wayne Williams
 Ms. Betty J. Wilson
 Sister Karl Mary Winkelmann
 Mr. & Mrs. Alan Winkelmann
 Mr. James Wittman
 Mr. & Mrs. James Wright
 Mr. Gary Young
 Dr. & Mrs. Carlos Yu
 Dr. & Mrs. Scott Zuick

**2022 Foundation
Event Supporters**

**Dr. Martin Luther King Jr.
Celebration Luncheon**

Presenting Sponsor
\$10,000
Christian Hospital Medical Staff

Hope Partner
\$2,500
Aetna
St. Louis Community College
State Farm-Christina Reynolds

Healing Partner
\$1,000
Bethesda Health

Foundation Gala

Distinguished Leadership Partners
\$10,000
Ascension
Centene Charitable Foundation
Clayco
Enterprise

Champion Partners
\$5,000
BJC HealthCare
Bryan Cave Leighton Paisner
Cardinals
Cigna
Husch Blackwell
McBride Homes
Midland States Bank
Paramount Bank

Courier Sponsors
\$3,500
Ronke Akintola, MD
KAI Enterprises
Padawer Bratton

Silent Auction Sponsors
\$3,000
Bethesda
Lewis Rice

Hope Partners
\$2,500
Aetna
Cardiothoracic Surgery North
Paric
TeamHealth

11th Annual Golf Outing

Presenting Sponsor
\$10,000
Midland States Bank

Eagle Sponsor
\$5,000
Morrison Health Care
Sandberg Phoenix

Birdie Sponsor
\$2,500
Bade Roofing, Inc.
Bethesda Health Group
Midwest Elevator

Par Sponsor
\$1,500
Healogics

Hole-in-One Sponsor
\$1,000
Bommarito

Beverage Cart
\$1,000
Ronke Akintola, MD
Christian Hospital Auxiliary

Hole Sponsor
\$500
100 Black Men
Analytical Pathology Services
Commercial Bank
Daikin-TMI
Delmar Garden Family
DH Pace
Edelen Door
Florissant Rotary Club
Grainger
Guarantee Electrical
Gunther Salt
Leon Uniform Company
McClure Engineering
NAACP North St. Louis County
Nalco Water
Pain Management
Paramount Bank
Peters-Eichler Mechanical
Pulmonary Consultants
Rhodey Construction
Siteman Cancer Center
St. Louis Cleaning and Restoration
St. Louis Community College
Webster University

**2023 Foundation
Event Supporters**

**Dr. Martin Luther King Jr.
Celebration Luncheon**

Hope Partner
\$2,500
Hazelwood School District
KAI Enterprises
Midland States Bank
St. Louis Community College
State Farm-Christina Reynolds

Healing Partner
\$1,000
Affinia Healthcare
Bethesda Health Group
Ponce Health Sciences University
Ranken Jordan Pediatric Bridge
Hospital
Shalom Church-City of Peace

12th Annual Golf Outing

Eagle Sponsor
\$5,000
Husch Blackwell
Sandberg Phoenix

Golfer Gift Sponsor
\$3,500
Midwest Elevator

Birdie Sponsor
\$2,500
Ameren
Ascension
Bade Roofing, Inc.
Bethesda Health Group
H. C. Sharp Company
McBride Homes
Midland States Bank
Paramount Bank
Pulmonary Consultants
St. Louis Blues
William C. Harris Funeral Home

Snack Shacks
\$2,000
Analytical Pathology

Par Sponsor
\$1,500
Elite Orthopedics
Healogics
Lewis Rice

Hole-in-One Sponsor
\$1,500
Bommarito

Beverage Cart Sponsor
\$1,000
Ronke Akintola, MD
Christian Hospital Auxiliary
Daikin-TMI
New Horizons Medical LLC

Beverage Station Sponsor
\$1,000
BJC Ortho & Sports Medicine
Bria Health Services
Commercial Flooring
Contemporary Landscape
The Edelen Co., Inc.
The Simon Law Firm

Hole Sponsor
\$500
American Response Vehicles
Beltservice Corp.
Carrollton Bank
CH Pain Management
Commercial Bank
Contemporary Landscape
Delmar Gardens
Electrical Workers Local No. 1
Guarantee Electrical
Gunther Salt Company
Johnson Controls
KAI Enterprises
Paramount Bank
Peters-Eichler
Phoenix Textile
Republic Services
Rhodey Construction
Simmons Hanly Conroy
St. Louis Cleaning and Restoration
Stifel
TaTa Sisterhood Foundation
Total Care Dental
TW Constructors, LLC.
Uncle Nearest
Wash U Division of Critical Care

Save the Date

7th Annual Dr. Martin Luther King Jr. Celebration
Friday, Jan. 12, 2024

Christian Hospital Foundation Gala
Saturday, March 2, 2024

Christian Hospital Foundation Golf Outing
Monday, May 20, 2024

Join Us for the 80s Flashback Costume Gala

Don't miss the 13th annual Christian Hospital Foundation Gala, Saturday, March 2, 2024. We'll be rockin' back to the 80s at the Missouri Athletic Club-Downtown starting at 5:30 p.m.

The Gala will include a cocktail reception, dinner, live and silent auctions, entertainment, dancing, and fun surprises throughout the evening!

Christian Hospital's health care heroes and community leader(s) of the year will be honored at the Gala. The exciting evening benefits the Foundation's Mammogram Assistance and Breast Cancer Assistance Funds, which provide free mammograms, education and continuing care for women and families facing breast cancer.



Visit christianhospital.org/giving/foundation/gala
or scan QR code for more information.